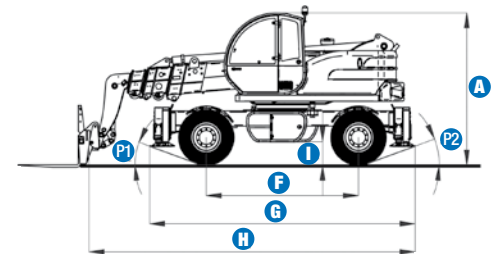
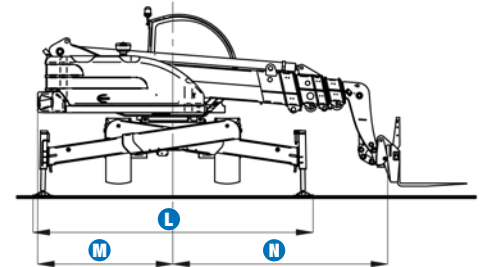
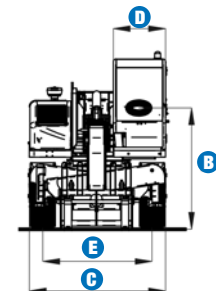


Specifications

MODEL	GTH-4020R	
MEASUREMENTS	Metric	Imperial
Lifting height maximum	19.64 m	64 ft 5.5 in
Lifting capacity maximum	4,000 kg	8,817.6 lbs
Lift capacity at maximum height	2,500 kg	5,511 lbs
Lift capacity at maximum reach	250 kg	551 lbs
Forward reach maximum	17.50 m	57 ft 5 in
Reach at maximum height	4.20 m	13 ft 9.5 in
A Height	3.03 m	9 ft 11 in
B Height at steering wheel	2.07 m	6 ft 9.5 in
C Width	2.43 m	8 ft
D Inside cab width	78 cm	2 ft 7 in
E Track	1.95 m	6 ft 5 in
F Wheelbase	3.03 m	9 ft 11.5 in
G Length at stabilisers	5.28 m	17 ft 4 in
H Length at fork-holder plate	7.13 m	23 ft 5 in
I Ground clearance	44 cm	1 ft 5 in
L Overall width, stabilisers extended	5.01 m	16 ft 5.5 in
M Side rear overhang	2.42 m	7 ft 11 in
N Front overhang	4.49 m	14 ft 9 in
P1 Obstruction angle	20°	20°
P2 Departure angle	20°	20°



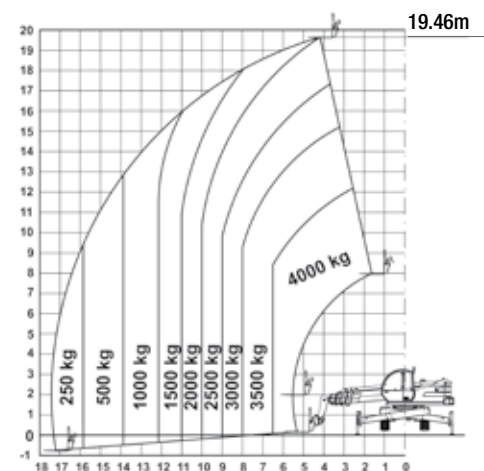
PRODUCTIVITY		
Lifting/lowering speed	15 sec./11 sec.	15 sec./11 sec.
Extension/retraction speed	29 sec./17 sec.	29 sec./17 sec.
Inside/outside turning radius	1.14 m/4.00 m	3 ft 9 in
Break-out force (with 800 L shovel SAE J 732/80)	7,400 kg	16,312.5 lbs
Towing capacity at dynamometer	8,000 kg	17,635 lbs
Travel speed maximum	30 km/h	18.6 mph
Fork-holder plate rotation	145°	145°
Chassis levelling on both axles	+/- 6°	+/- 6°
Floating forks	L 1,200 mm Section 120x50mm	L 3 ft 11 in Section 4.5 in x 2 in
Tyres (DIN 70361)	18-19.5" PR16, 10 holes wheel disk	



POWER		
Engine	diesel 4 cylinders, 102 hp (74.9 kW)	
Tank capacities		
Petrol	145 Lt	38 gal
Engine oil	12 Lt	3 gal
Hydraulic oil	230 Lt	61 gal
Hydraulic output/pressure	100 Lt/min-250 bars	22 gal./3,625 psi

WEIGHT		
Weight*	15,200 kg	33,507 lbs

STANDARDS COMPLIANCE
Operating cab conforms to ISO3471 (ROPS) and ISO3449 (FOPS)
Low emission engine conforms to UE 97/68 directives.
GOST R50950-96



Lift capacity chart (with stabilisers)

EN1459, Annex B

* Weight will vary depending on options and/or country standards

Features

STANDARD FEATURES

MEASUREMENTS

- 4,000 kg (8,817.6 lb) maximum lift capacity
- 19.64 m (64 ft 5.5 in) maximum lift height
- 17.50 m (57 ft 5 in) maximum forward reach

PRODUCTIVITY

- 4 x 4
- 4 - wheel steer
- 3 steering modes:
 - front wheel steer
 - crab steer
 - coordinated steer
- Power assisted steering
- Hydraulic load sensing regulation
- Four hydraulic independent stabilisers
- Turret with 360° continuous rotation
- Quick coupling of tools from cab
- Left hand joystick kit
- Two-speed hydrostatic motor coupled to a two-speed mechanical gearbox
- Two electro-proportional 4x1 multi-function joystick
- Limited slip differential on front axle
- 18-19.5" tyres
- Floating forks
- Attachment holder plate with mechanical coupling
- Adjustable pneumatic seat with armrests
- Large diameter steering wheel
- Front windscreen wipers
- Front & rear lights
- Easy access to engine and components
- Display shows when the scheduled maintenance is required
- Oil immersed multi-disc brakes on both axles
- Lockable fuel tank
- 360° stability control system with:
 - Digital load monitoring display
 - Digital display monitoring of boom extension and inclination
 - Visual display with coloured LEDs
 - Audible alarm
- Longitudinal stability control system with load monitor

STANDARD FEATURES cont.

- Black box records functional parameters and anomalies
- Automatic lock-out of boom extension and lowering
- Chassis levelling on both axles +/- 6°
- Control enable switch

POWER

- Deutz turbo diesel 102 hp (74.9 kW)

OPTIONS & ACCESSORIES

PRODUCTIVITY

- Air conditioning
- Second hydraulic line on boom
- Windshield protection grid
- Wiper on cab roof
- Adjustable spotlight on chassis or boom
- Spare wheel
- Foam filled tyres
- Complete radio remote control with joystick
- GPS module to record the position of machines
- Failure alarm system to transfer data from black box
- 20 ton hydraulic jack and 30 mm wheel box wrench

ATTACHMENT OPTIONS

- 800 L loading shovel
- Concrete mixing bucket 500/800 L manual/hydraulic discharge
- Concrete mixing bucket 500 L with remote control
- Brick holder basket
- Fork side-shift +/- 100 mm
- FEM 3 plate and forks kit
- Fixed hook on plate
- 4 m jib, 900 kg capacity
- 4 m jib with 900 kg capacity hydraulic winch
- 3000 kg hydraulic winch
- Fixed or rotating man-platforms (up to 4.64 m)

European Offices

UK

The Maltings
Wharf Road
Grantham NG31 6BH
UK
Tel: +44 (0)1476 584333
Fax: +44 (0)1476 584334

France

10, ZA de la Croix St. Mathieu
28320 Gallardon
France
Tel: +33 (0)2 37 26 09 99
Fax: +33 (0)2 37 26 09 98

Germany

Finienweg 3
28832 Achim/Bremen
Germany
Tel: +49 (0)4202 8852-0
Fax: +49 (0)4202 8852-25

Spain

Gaià 31, Pol. Ind. Plà d'en Coll
08110 Montcada i Reixac
Barcelona
Spain
Tel: +34 93 572 50 90
Fax: +34 93 572 50 91

Scandinavia

Tagenevägen 72
425 37 Hisings Kärra
Sweden
Tel: +46 31 57 51 00
Fax: +46 31 57 90 20

Genie United States

18340 NE 76th Street
P.O. Box 97030
Redmond, Washington 98073-9730
USA
Tel: +1 425 881-1800
Fax: +1 425 883-3475

WEB: www.genieindustries.com
Email: infoeurope@genieind.com

Distributed By: