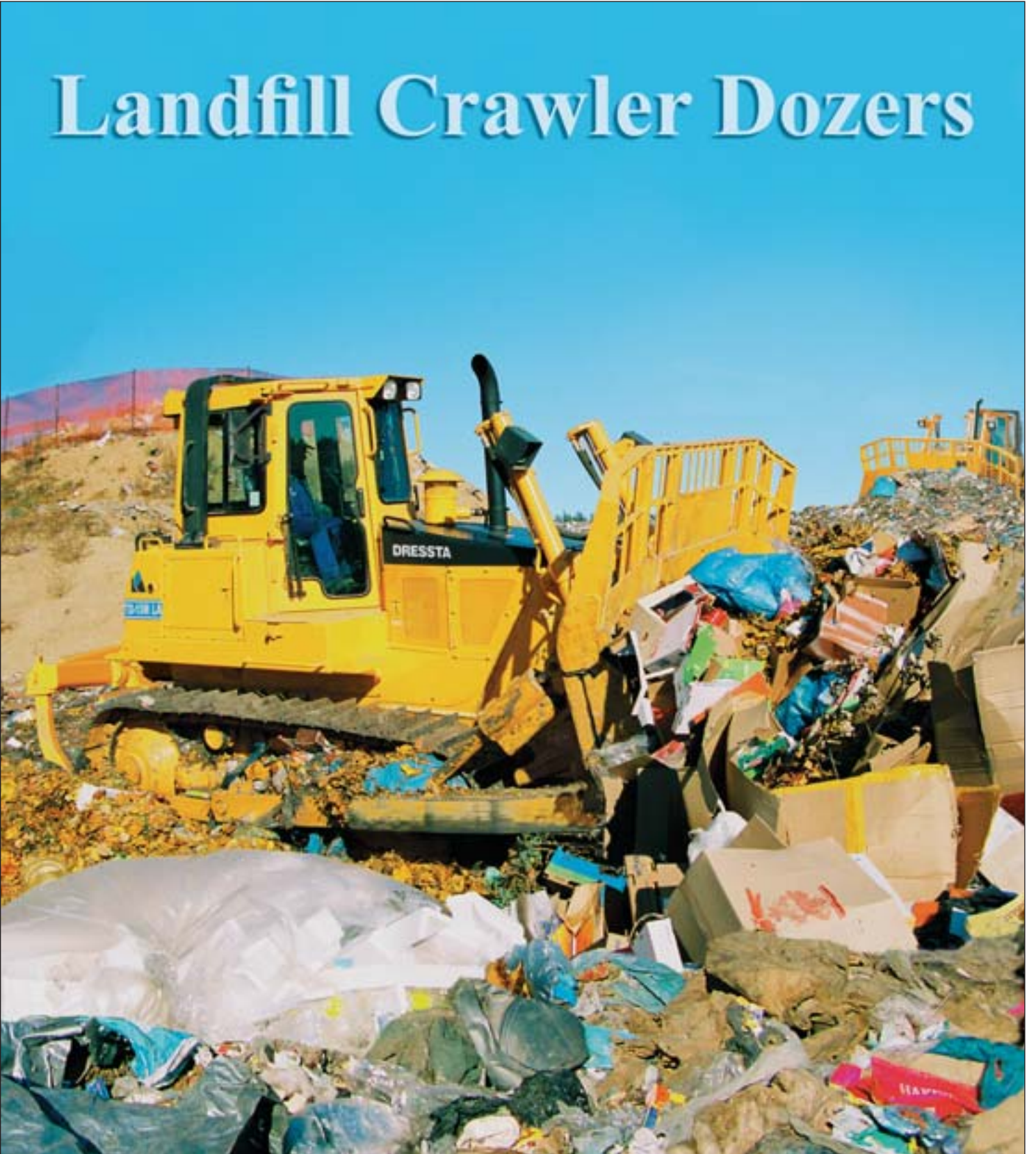




TD-25M LA
TD-20H LA
TD-15M LA

Landfill Crawler Dozers



Landfill Crawler Dozers

	TD-25M LA		TD-20H LA	TD-15M LA
ENGINE				
Make & Model	Cummins QSX15		Cummins M11-C	Cummins CTAA 8.3-C
Net FW Horsepower	238 kW (320 HP) @ 2100 rpm		168 kW (225 HP) @ 2100 rpm	142 kW (190 HP) @ 2200 rpm
Displacement	15 l (912 cu.in)		10.8 l (661cu.in)	8.3 l (505 cu.in)
Number of cylinders	6		6	6
Aspiration	T/A		T/A	T/A
POWER TRANSFER	Torque Converter		Torque Converter	Torque Converter
TRANSMISSION Type	Countershaft, P.S.		Countershaft, P.S.	Countershaft, P.S.
STEERING	Multi-Disc, Wet 2-Speed Steering		Multi-Disc, Wet 2-Speed Steering	Multi-Disc, Wet 2-Speed Steering
Control	Joystick		2 left hand levers	Joystick
BRAKES	Multi-Disc, Wet		Multi-Disc, Wet	Multi-Disc, Wet
UNDERCARRIAGE				
Track Shoes w/clean out holes	560 mm (22") 610 mm (24") 660 mm (26") 711 mm (28")		560 mm (22") 610 mm (24") 660 mm (26")	508 mm (20") 560 mm (22") 610 mm (24") 660 mm (26")
Number of Track Shoes (per side)	38		40	39
Track on Ground	3.15 m (10'4")		2.86 m (9'5")	2.64 m (8'8")
Track Rollers (per side)	7		6	6
Track Gauge	2.14 m (7')		1.98 m (6'6")	1.93 m (6'4")
FLUID REFILL CAPACITIES				
Fuel Tank	825 l (218 gal)		490 l (130 gal)	388 l (102.5 gal)
Engine Crankcase	49 l (13 gal)		34 l (9 gal)	23 l (6.1 gal)
BLADE EQUIPMENT				
Blade with trash rack	Semi-U	Full-U	Semi-U	Semi-U
Capacity (SAE)	17.8 cu.m (23.3 cu.yd)	21.3 cu.m (27.9 cu.yd)	11.9 cu.m (15.6 cu.yd)	10.9 cu.m (14.3 cu.yd)
Width x Height	4.05 x 2.45 m (159.4" x 96.5")	4.35 x 2.45 m (171.3" x 96.5")	3.49 x 2.14 m (137.4" x 84.3")	3.44 x 2.05 m (135.4" x 80.7")
Max. lift, straight	1.27 m (50")	1.27 m (50")	1.18 m (47")	1.10 m (43.7")
Max. drop below ground level	600 mm (23.6")	600 mm (23.6")	439 mm (17.3")	460 mm (18.1")
OPERATING WEIGHT (approx.)	38560 kg (85,010 lb)	39200 kg (86,420 lb)	26850 kg (59,194 lb)	23375 kg (51,533 lb)

NOTE: This spec sheet contains general specification only, for detailed information please refer to standard TD-15M, TD-20H and TD-25M spec sheets.



STANDARD EQUIPMENT

TD-25M LA

- Air cleaner, dry type with exhaust aspirated primary, safety elements and service indicator Includes turbine type precleaner with debris guard
- Air conditioner/heater/pressurizer/defroster, underseat mounted; A/C condenser, behind roof mtd
- Alarm, back-up
- Alternator, 80 A
- Antifreeze, -37° C (-34°F)
- Batteries, (4) 12 V, 1920 CCA, maintenance free, cold start
- Brakes, parking, with lock
- Coolant filter conditioner
- Cab with 2 post ROPS, (SAE J1040, J231), sound suppression, air recirculation system, 2 front & 2 rear lights, 4 wipers w/washers, dome light, inside mirror
- Cooling module; includes radiator, transmission oil cooler, fuel cooler, hydraulic oil/fan drive oil cooler, charge air cooler; isolation mounted
- Crankcase guard winch, electrical
- Cylinders, lift, with quick drop valve
- Decelerator - right and brake-center, foot operated
- Diagnostic centers for power train and equipment hydraulic pressures
- Drawbar, w/counterweight 1860 kg (4,100 lbs)
- Ecological drains for engine oil, radiator coolant and hydraulic oil
- Engine hood, sloped, perforated type
- Engine side doors, hinged, perforated type
- Ether start
- Exhaust, resonator with elbow
- Fan, hydraulic driven, airflow reversible
- Filters, engine oil, full flow and by-pass with replaceable "spin-on" elements
- Filters, power train & equipment hydraulics, "spin-on" micro glass type
- Final drive seal
- Fuel strainer
- Guards: crankcase, hinged, severe service type with front pull hook, fan, radiator, dirt deflector, sprocket, transmission, severe service type
- Horn, electric
- Hydraulic control, 1 valve, 1 lever with pilot operated blade control (lift)
- Instrument panel light
- Instruments:
 - Gauges: fuel level, engine coolant temperature, engine oil pressure, torque converter oil temp., voltmeter, hourmeter, joystick control display
 - Warning lights: air cleaner filter, transmission oil filter, hydraulic oil filter, transmission/clutch oil low pressure, reversed air flow
 - Audible & visual warning system: low engine coolant level, low engine oil pressure, high engine coolant temp., high torque converter oil temp.
- Lights w/guards, 2 front - lift cylinders mounted, 2 rear w/metal grid covers, fuel tank mounted
- Muffler, under engine hood, insulated
- Radiator guard doors, louvered, two-piece, hinged, quick opening
- Rear operator platform
- Receptacle, charging
- Seat belt (SAE J386) - 3" wide, retractable
- Seat, deluxe, air suspension type, fabric cover, adjustable with arm rests, swivel 14° to right
- Special rear, perforated type enclosure plate beneath fuel tank retained, quick opening, provides for rear entry of cooling air
- Starting, 24 V
- Steel debris deflector bars, below engine side doors
- Steering, 2 speed, left hand single lever control (joystick)
- Tools compartment
- Torque converter, single stage
- Track adjusters, hydraulic
- Track chain, sealed and lubricated (LTS) with split master link, 38 links
- Track chain guides, integral
- Track frame, 7 roller, 2140 mm (84") gauge, oscillating type, lifespan lubricated rollers and idlers
- Track shoes, 560 mm (22"), severe service type with clean out holes
- Transmission, power shift, 3 speeds forward, 3 reverse combined with 2 speed steering provides 6 speeds forward and 6 reverse
- Vandalism protection for cab & engine enclosures
- Water separator, fuel system

OPTIONAL ATTACHMENTS

- Air recirculation system with MSHA external filter
- AM/FM CD radio
- Blade equipment:
 - Full-U with trash rack, 21.3 cu.m (27.9 cu.yd), includes hydraulic tilt
 - Semi-U with trash rack, 17.8 cu.m (23.3 cu.yd), includes hydraulic tilt
 - Hydraulic tilt/pitch for Semi-U or Full-U dozer
- Drawbar counterweight, 1860 kg (4,100 lbs) with additional counterweight (cast), 1452 kg (3,200 lbs)
- Guards:
 - Rock deflector sprocket
 - Striker bars, front
 - Striker bars, rear (not for use w/ripper or winch)
 - Include rigid drawbar and counterweight (max. 6 vertical plates)
 - Tank guard, bolted
 - Track roller, full length
- Hydraulic controls, 3-spool valve, 2-lever (for use w/ripper)
- Lights, 2 front, ROPS mtd
- Mirrors, 2 pcs, exterior, cab mtd
- Ripper, multi-shank, w/hydraulic pitch
 - rear striker bars, frame mounted
 - ripper shank w/pin, max. 3
- Ripper, single-shank, w/hydraulic pitch
 - rear striker bars, frame mounted
 - ripper shank, standard dig
 - ripper shank, deep dig
 - pin puller, hydraulic
- Starting/charging receptacle plug assembly w/15 ft cable
- Tools, in metal box
- Track shoes with clean out holes, severe service type:
 - 610 mm (24") 660 mm (26") and 711 mm (28")

STANDARD EQUIPMENT

- Air cleaner, dry type with exhaust aspirated primary, safety elements and service indicator
Includes turbine type precleaner with debris guard
- Air conditioner / heater / pressurizer / defroster, underseat mounted
- Alarm, back-up
- Alternator, 80 A
- Antifreeze, -37° C (-34° F)
- Batteries, (2) 12 V, 815 CCA, maintenance free
- Brakes, foot, hydraulic boosted
- Drawbar, 2 post (SAE J1040, J231)
- Cab with sound suppression, air recirculation system, 2 front & 2 rear lights, 4 wipers w/washers, dome light, inside mirror
- Debris screen, radiator
- Decelerator - right and brake-center, foot operated
- Drawbar, heavy-duty with counterweight
- Engine hood, perforated type
- Engine side doors, hinged, perforated type
- Ether start
- Exhaust pipe extension w/elbow
- Fan, blower
- Filters, oil, full flow with replaceable elements
- Filters, transmission

- Final drive seal
- Fuel strainer
- Guards: crankcase, hinged, severe service type with front pull hook, fan radiator, rock deflector sprocket, transmission, severe service type
- Heat exchangers: engine oil, torque converter and transmission oil
- Horn, electric
- Hourmeter
- Hydraulic control, 1 valve, 1 lever
- Instruments, grouped in resilient-mounted panel.
Includes audible & visual warning system, red lights & buzzers for: low engine oil pressure, high engine coolant temp, high torque converter oil temp and low engine coolant level
- Lights, 2 front, 1 rear on tractor, w/metal grid covers
- Muffler
- Powertrain diagnostic center
- Radiator, isolation mounted
- Radiator, guard doors, quick opening 2-piece louvered, hinged
- Rear operator platform
- Receptacle, starting/charging

- Seat belt (SAE J386) - 3" wide, retractable
- Seat, deluxe, air suspension type, fabric cover, adjustable with arm rests, swivel 14° to right
- Special rear hinged, perforated type enclosure plate beneath fuel tank retained with quick opening latch pins, provides for rear entry of cooling air
- Starting, 24 V
- Steel debris deflector bars, below engine side doors
- Steering, 2 speed, left hand controls
- Tools compartment
- Torque converter, single stage
- Track adjusters, hydraulic
- Track chain, sealed and lubricated (LTS) with split master link, 40 links
- Track chain guides, integral
- Track frame, 6 roller, 1981 mm (78") gauge, oscillating type, lifespan lubricated rollers and idlers
- Track shoes, 560 mm (22"), grouser type, with clean out holes
- Transmission, power shift, 3 speeds forward, 3 reverse, combined with 2 speed steering provides 6 speeds forward, 6 reverse
- Vandalism protection for cab & engine enclosures
- Water separator, fuel system

OPTIONAL ATTACHMENTS

- Air recirculation system with MSHA external filter
- AM/FM CD radio
- Batteries, cold start (2) 12V, 960 CCA
- Blade equipment:
 - Semi-U with trash rack, 11.9 cu.m (15.6 cu.yd), complete with blade components, includes hydraulic tilt
- Crankcase guard winch, electrical
- Exhaust pipe extension w/guard, for sweeps

- Guards:
 - Track roller, full length
 - Striker bars, front
 - Striker bars, rear (not for use w/ripper or winch) Include rigid drawbar and counterweight (max. 5 vertical plates)
- Hydraulic controls, 3-spool valve, 2 lever
- Lights, 2 front, ROPS mtd
- Mirrors, 2 pcs, exterior, cab mtd

- Ripper, multi-shank, w/provision for 3 shanks
 - Ripper shank w/pin
 - Pitch, hydraulic, for ripper beam
- Sealed track system
- Screen, rear (for use with forestry sweeps)
- Sweeps, forestry, front and rear
- Tools, in metal box
- Track shoes, 610 mm (24") and 660 mm (26") clipped corner with clean out holes

STANDARD EQUIPMENT

- Air cleaner, dry type with exhaust aspirated primary, safety elements and service indicator
Includes turbine type precleaner with debris guard
- Air conditioner / heater / pressurizer / defroster, underseat mounted; A/C condenser behind roof mtd
- Alarm, back-up
- Alternator, 80 A
- Antifreeze, -37° C (-34° F)
- Batteries, (2) 12 V, 815 CCA, maintenance free
- Brakes, foot, spring applied, hydraulic released
- Cab with 2 post ROPS, (SAE J1040, J231), sound suppression, air recirculation system, 2 front & 2 rear lights, 4 wipers w/washers, dome light, inside mirror
- Coolant filter conditioner
- Cooling module; includes radiator, transmission oil cooler, hydraulic oil cooler, charge air cooler; isolation mounted
- Crankcase guard winch, electrical
- Decelerator - right and brake-center, foot operated
- Diagnostic centers for power train and equipment hydraulic pressures
- Drawbar, fixed
- Ecological drains for engine oil, radiator coolant and hydraulic oil
- Engine hood, sloped, perforated type
- Engine side doors, hinged, perforated type

- Exhaust pipe extension w/elbow
- Ether start
- Fan, hydraulically actuated, 3-in-1 reversible pitch
- Filters engine oil, full flow and by-pass with replaceable "spin-on" elements
- Filters, power train
- Final drive seal
- Fuel strainer
- Guards, crankcase, hinged, severe service type with front pull hook, fan, sprocket rock deflector and dirt deflector, transmission severe service type
- Horn, electric
- Hydraulic control, 2-spool valve, 1 lever (lift/tilt)
- Instruments:
 - Gauges: fuel level, engine coolant temp., engine oil pressure, torque converter oil temp., voltmeter, hourmeter, brake lock
 - Warning lights: air cleaner filter, transmission oil filter, hydraulic oil filter, transmission/clutch oil low pressure Audible & visual warning system: low engine coolant level, low engine oil pressure, high engine coolant temp., high torque converter oil temp.
- Lights w/guards, 2 front - lift cylinders mounted, 2 rear with metal grid covers - fuel tank mounted
- Muffler, under engine hood, insulated
- Radiator guard door, louvered, hinged, quick opening

- Rear operator platform
- Receptacle, starting/charging
- Seat belt (SAE J386) - 3" wide, retractable
- Seat, deluxe, air suspension type, fabric cover, adjustable with arm rests, swivel 14° to right
- Special rear hinged, perforated type enclosure plate beneath fuel tank retained, quick opening, provides for rear entry of cooling air
- Starting, 24 V
- Steel debris deflector bars, below engine side doors
- Steering, planetary type, 2 speed, left hand single lever control (joystick)
- Tools compartment
- Torque converter, single stage
- Track adjusters, hydraulic
- Track chain guides, integral
- Track chain, sealed and lubricated (LTS) with split master link, 39 links
- Track frame, 6 roller, 1930 mm (76") gauge, oscillating type, lifespan lubricated rollers and idlers
- Track shoes, 508 mm (20"), severe service with clean out holes
- Transmission, power shift, 3 speeds forward, 3 reverse, preset travel speed selection and auto-downshift
- Vandalism protection for cab & engine enclosures

OPTIONAL ATTACHMENTS

- Air recirculation system with MSHA external filter
- AM/FM CD radio
- Batteries, cold start (2) 12 V, 960 CCA
- Blade equipment:
 - Semi-U with trash rack, 10.9 cu.m (14.3 cu.yd)
 - Hydraulic tilt
 - Hydraulic tilt/pitch
- Exhaust pipe extension w/guard, for sweeps
- Fan, reversible pitch
- Guards
 - Final drive, rock
 - Tank guard, bolted
 - Track roller, full length

- Striker bars, front
- Striker bars, rear (not for use w/ripper or winch) Include rigid drawbar and counterweight (max. 5 vertical plates)
- Hydraulic controls:
 - 1-spool valve, 1 lever (for use without tilt)
 - 2-spool valve, 1 lever (for use with tilt/pitch)
 - 3-spool valve, 2 lever (for use w/ripper and tilt/pitch)
- Lights, 2 front, ROPS mtd
- Mirrors, 2 pcs, exterior, cab mtd
- Ripper, multi-shank (max. 3 shanks), includes rear striker bars-ripper frame mtd

- Screen rear
- Sweeps, forestry, front and rear
- Screening pkg; cab for screens installation must be ordered
 - Screens for cab windows (front, rear, side and doors), bolted, black painted
 - Screens for cab lights (black painted)
- Starting/charging receptacle plug assembly
- Tools, in metal box
- Track shoes with clean out holes, severe service type 560 mm (22"), 610 mm (24"), 660 mm (26")

Specifications subject to change without notice. Illustrations and pictures may include optional equipment and may not include all standard equipment.

DRESSTA Co.Ltd.

Kwiatkowskiego 1, 37-450 Stalowa Wola, P O L A N D
tel. +48 15 843 5252, 843 4556 fax: +48 15 844 4714, 872 0207
www.dressta.com.pl